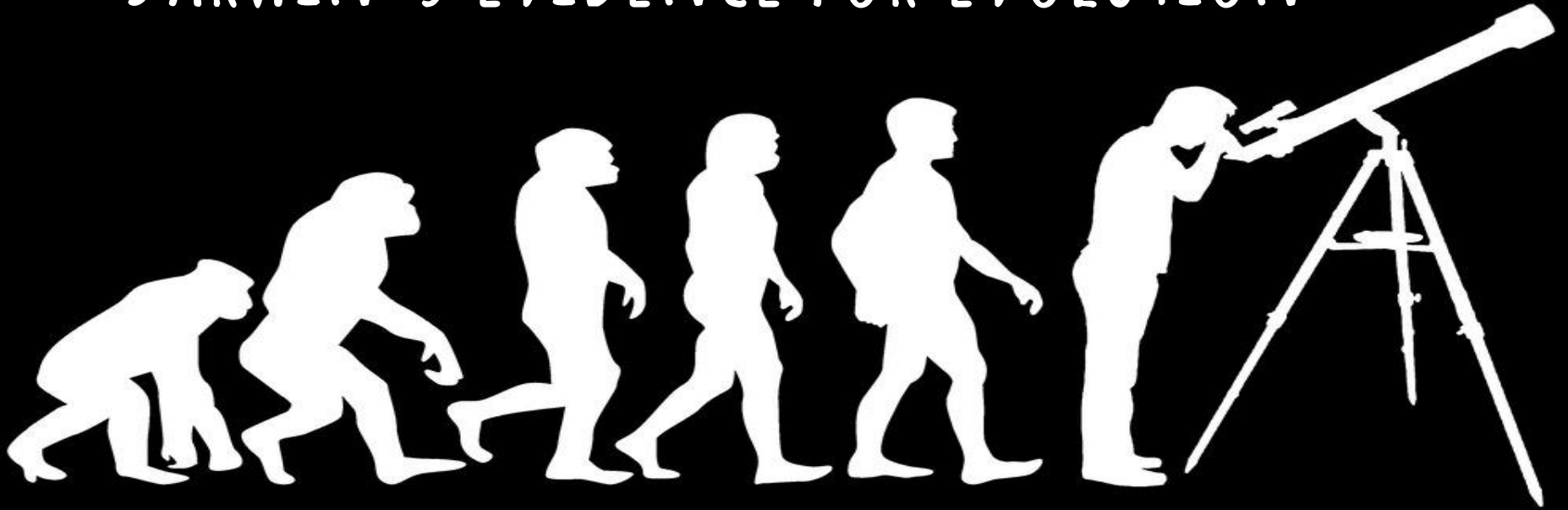
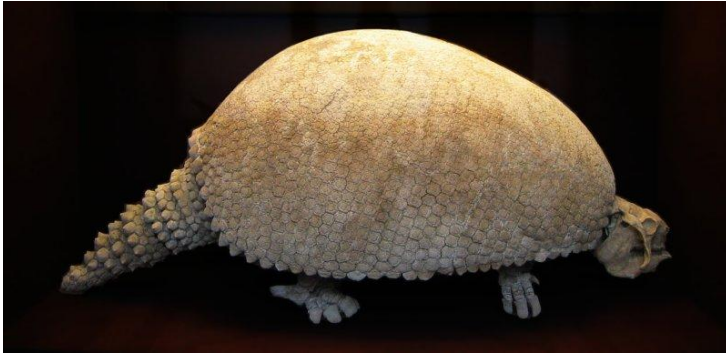


# DARWIN'S EVIDENCE FOR EVOLUTION



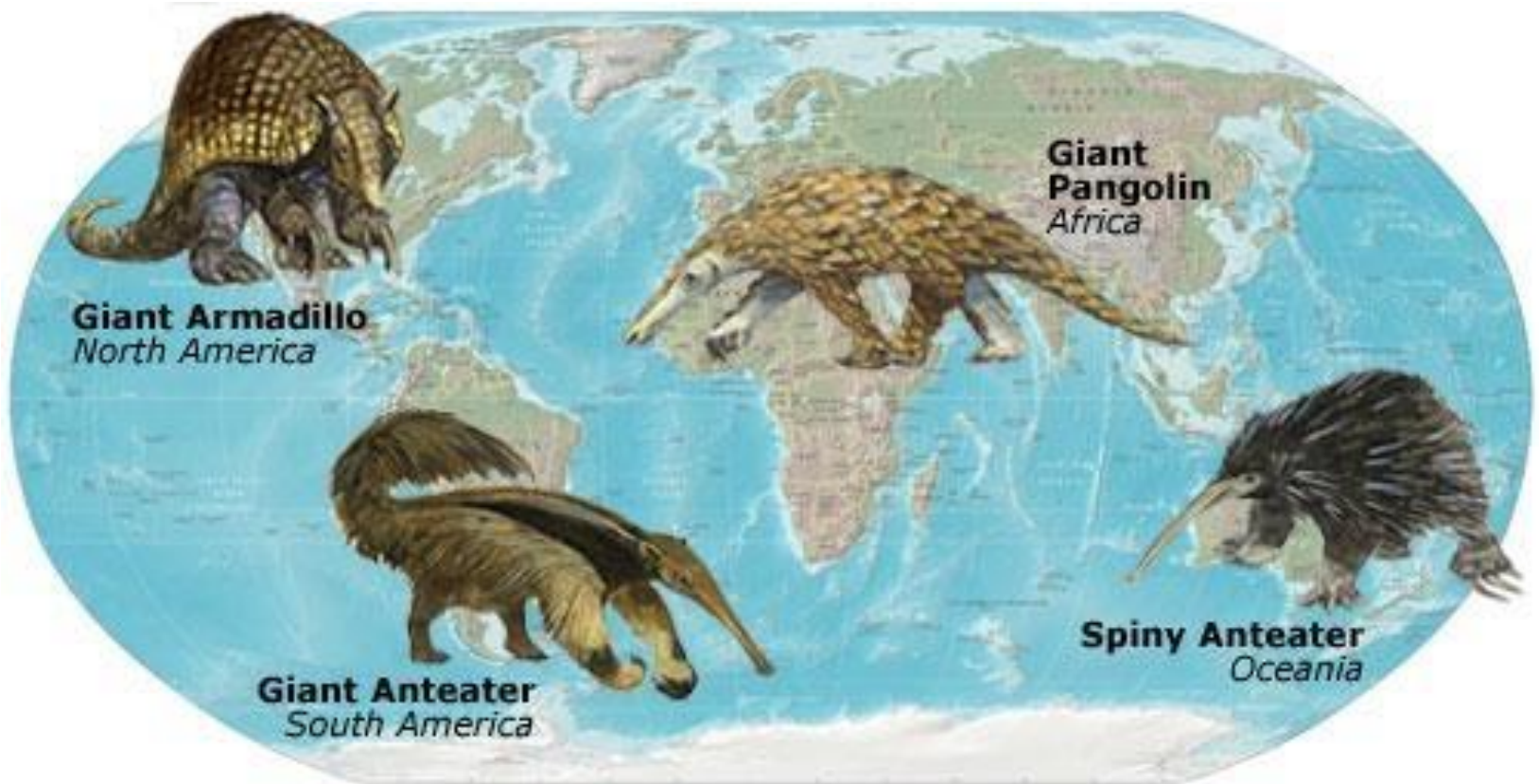
# 1. Fossil record

fossils of extinct species still resemble some species alive today



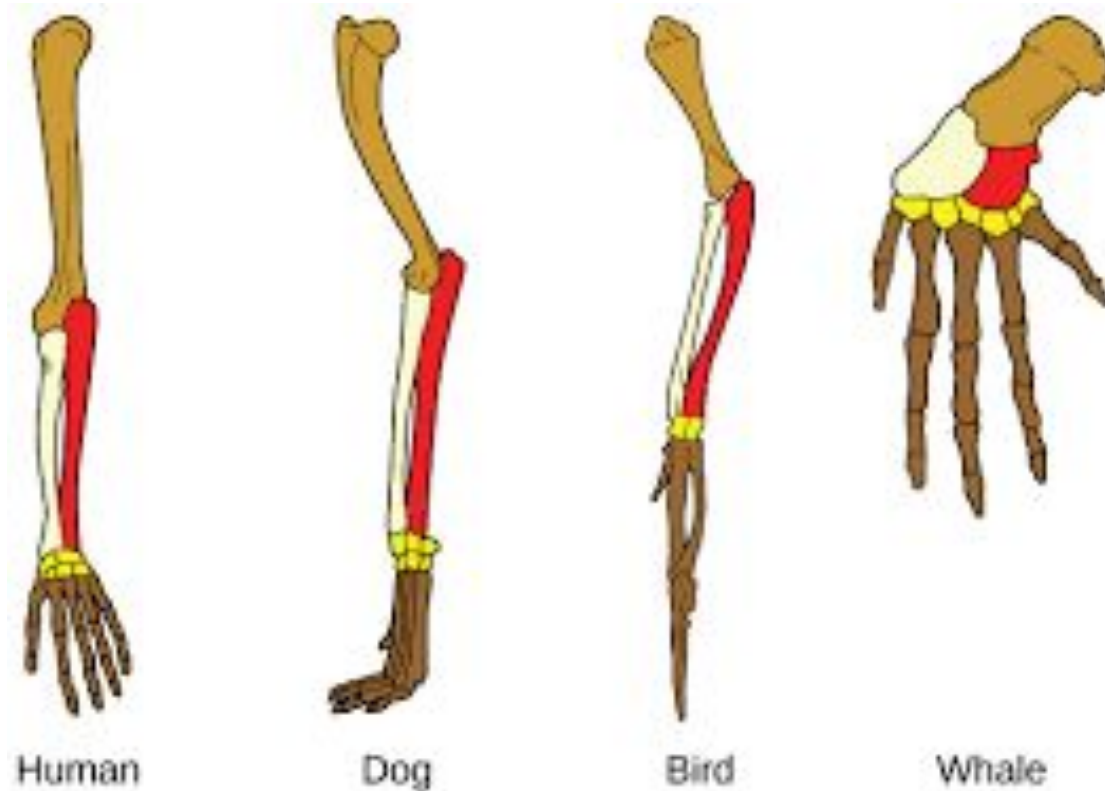
## 2. Species distribution

similar species living in different regions



### 3. Homologous Body Structures

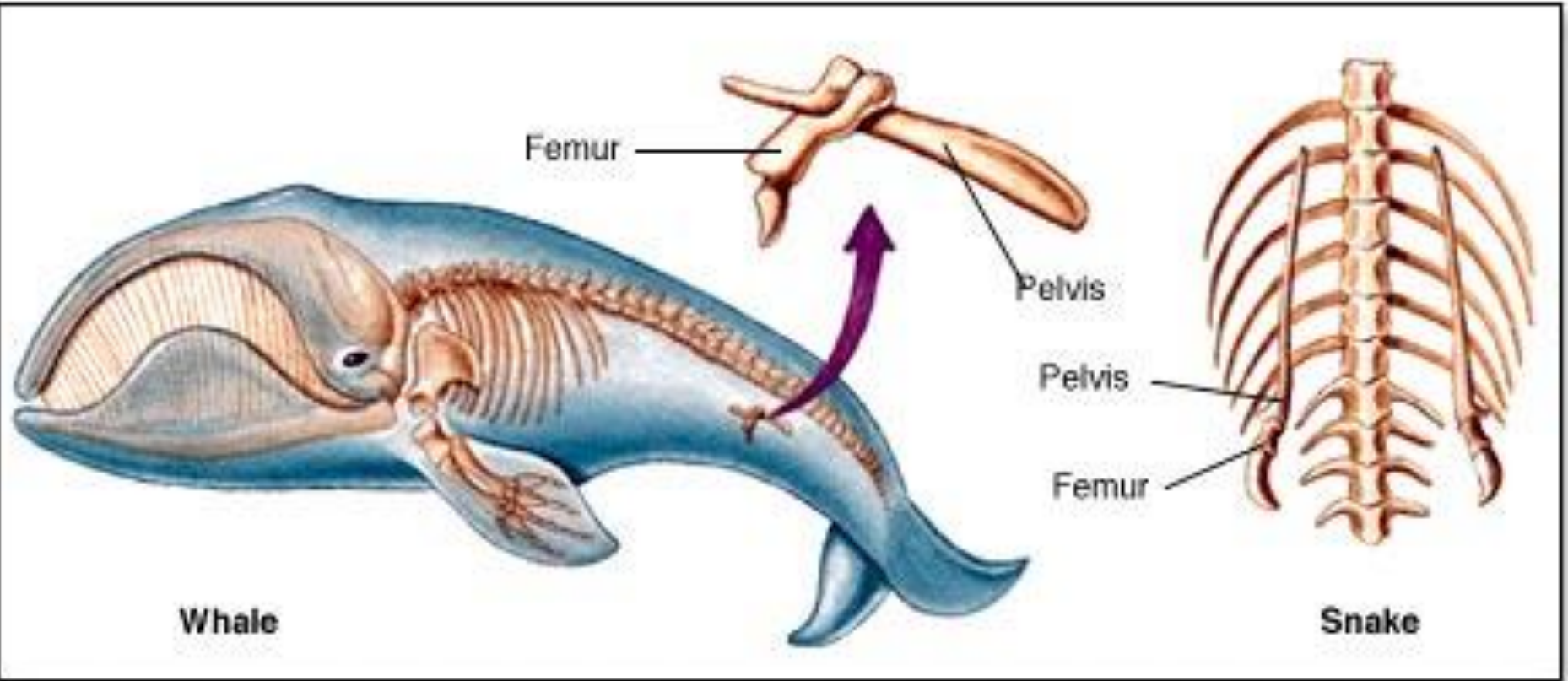
*anatomical* similarities in different animal groups





#### 4. Vestigial organs

body parts with little or no function





## 5. Embryology

early stages (embryos) of many vertebrates are similar