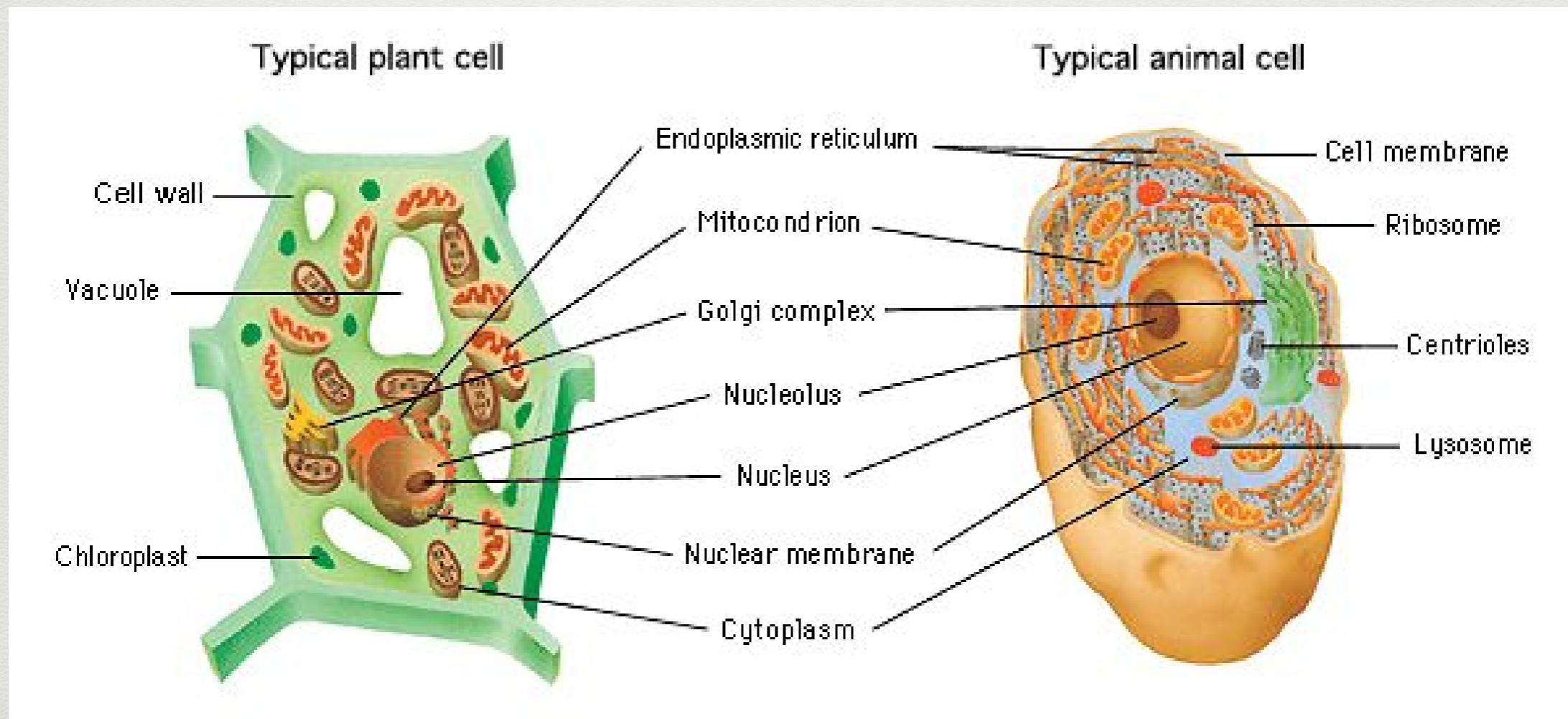


Plant Cell vs. Animal Cell

- Plant cells typically have 3 organelles that animal cells lack

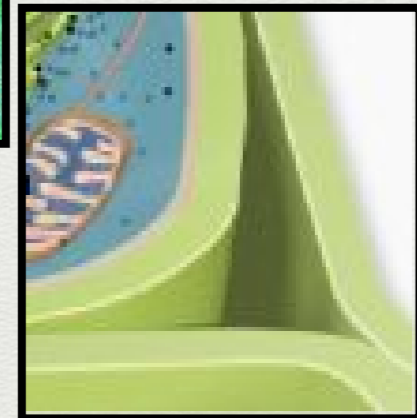


Plant Cell vs. Animal Cell

- Cell walls -
 - outer most structure of the plant cell
 - supports and protects the cell
 - composed of cellulose w/ embedded proteins

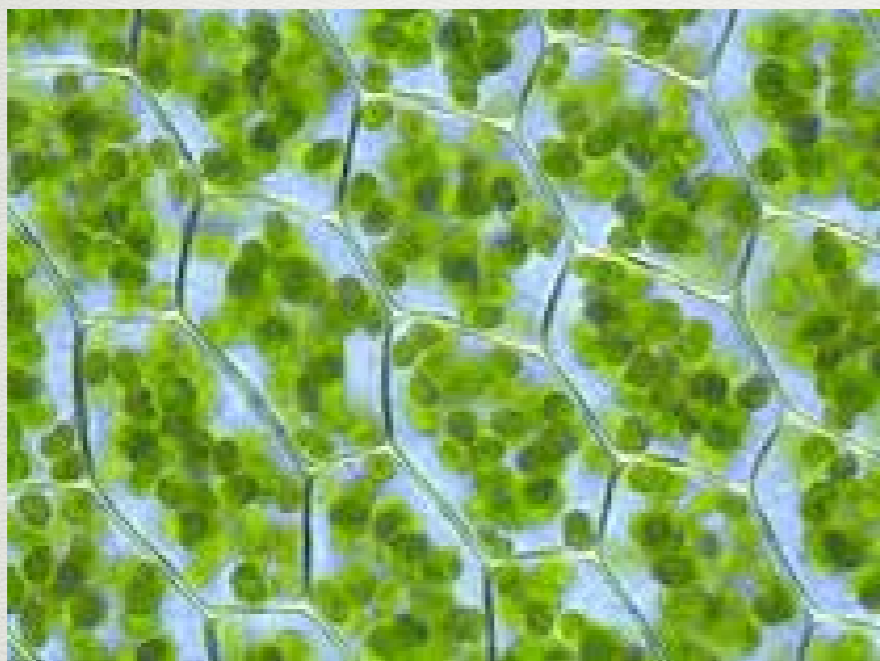
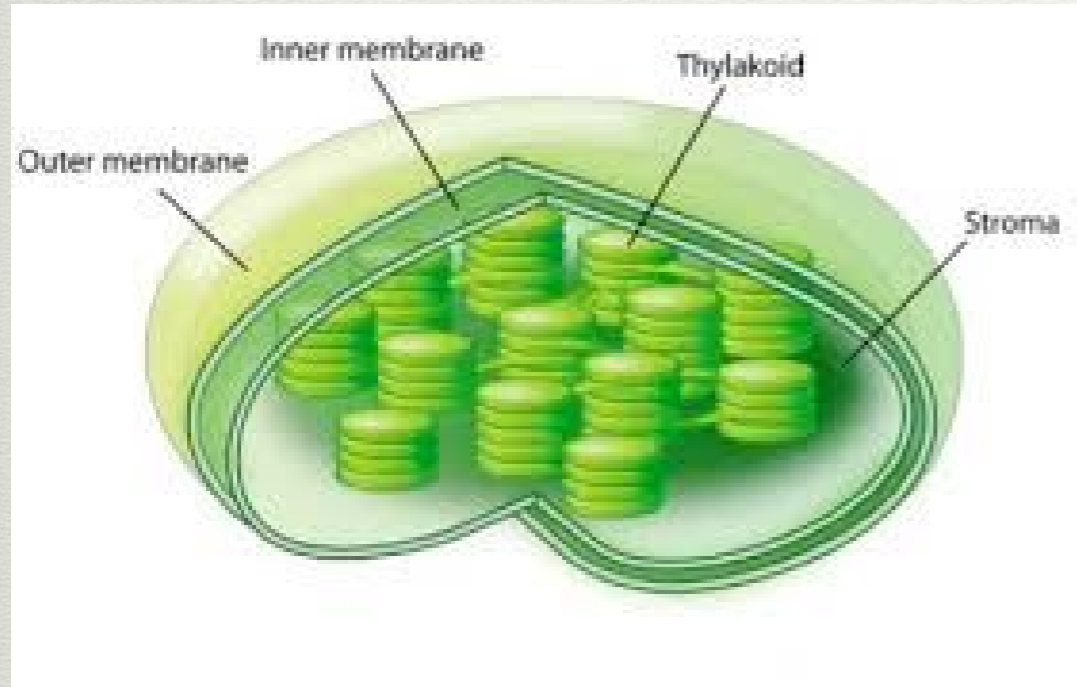


Cell Wall of Elodea



Cell Wall Layers

Plant Cell vs. Animal Cell



- Plastids -
 - surrounded by two membranes and contains DNA
 - store food or pigments
 - Ex: chloroplast - site of photosynthesis