

# Evolutionary Classification

---

Chapter 18

# Classifying Organisms

Should we classify animals based solely on similar characteristics?



*Ailuropoda melanoleuca*



*Ursus arctos*

## Phylogeny:

the study of evolutionary relationships between organisms.

**Crab**



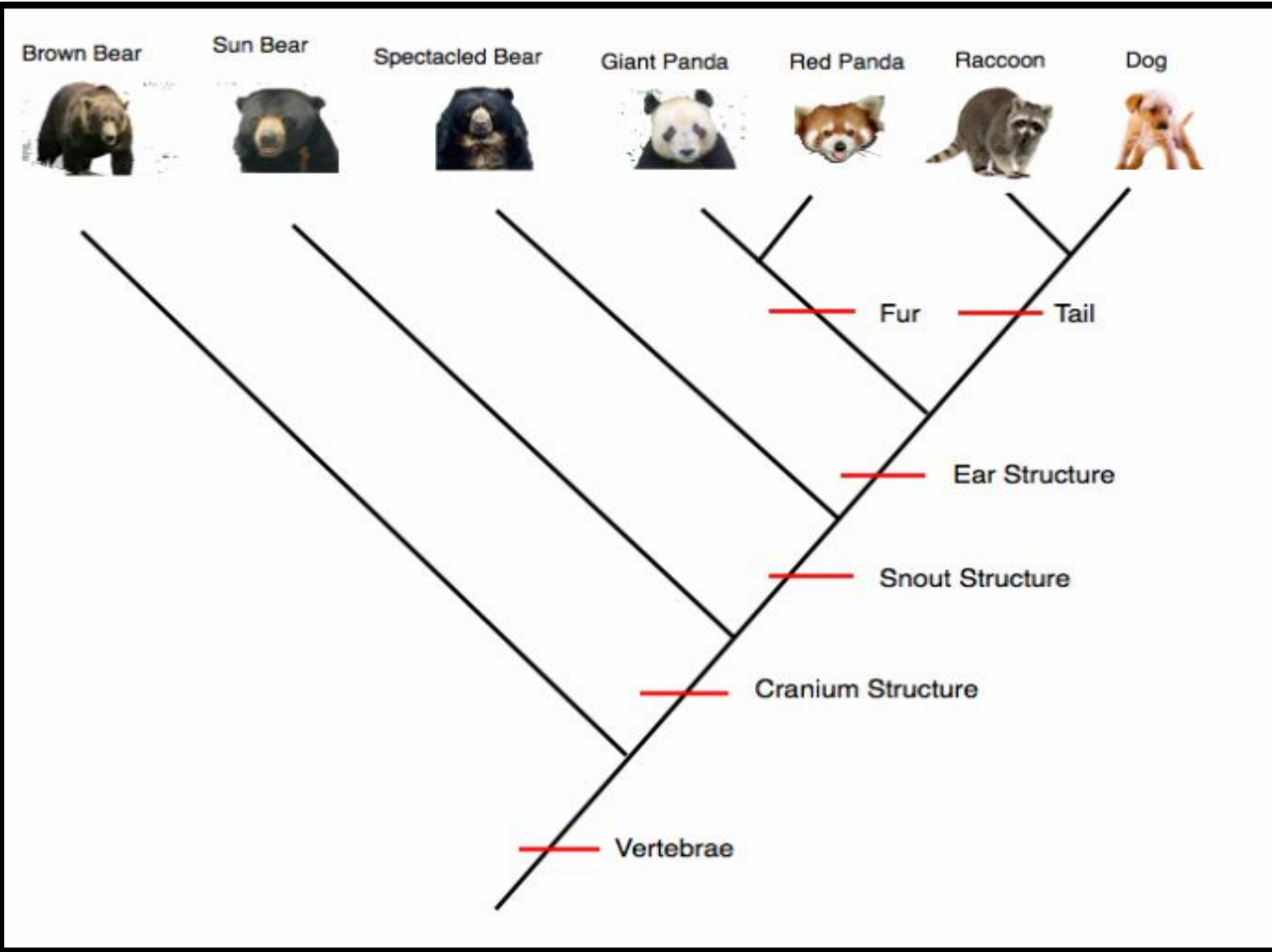
**Barnacle**



**Limpet**







**Cladogram:**  
 diagram used to  
 show evolutionary  
 relationships  
 between  
 organisms