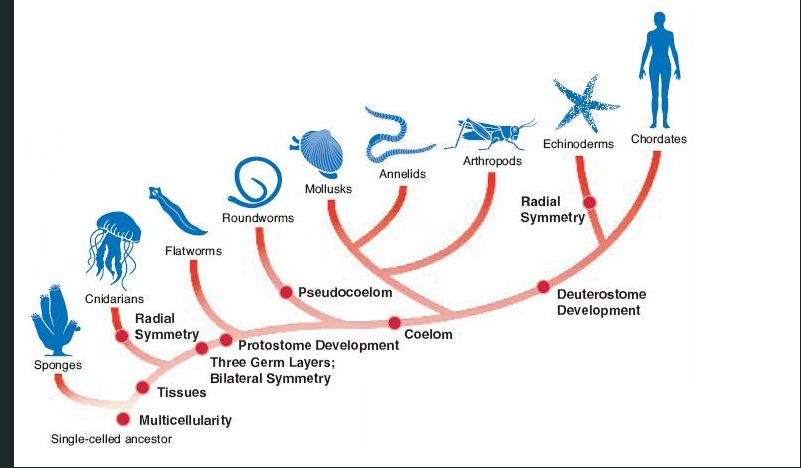


Evolutionary Classification



Chapter 18

Classifying Organisms

Should we classify animals based solely on similar characteristics?



Ailuropoda melanoleuca



Ursus arctos

Phylogeny:

the study of evolutionary relationships between organisms.

Crab

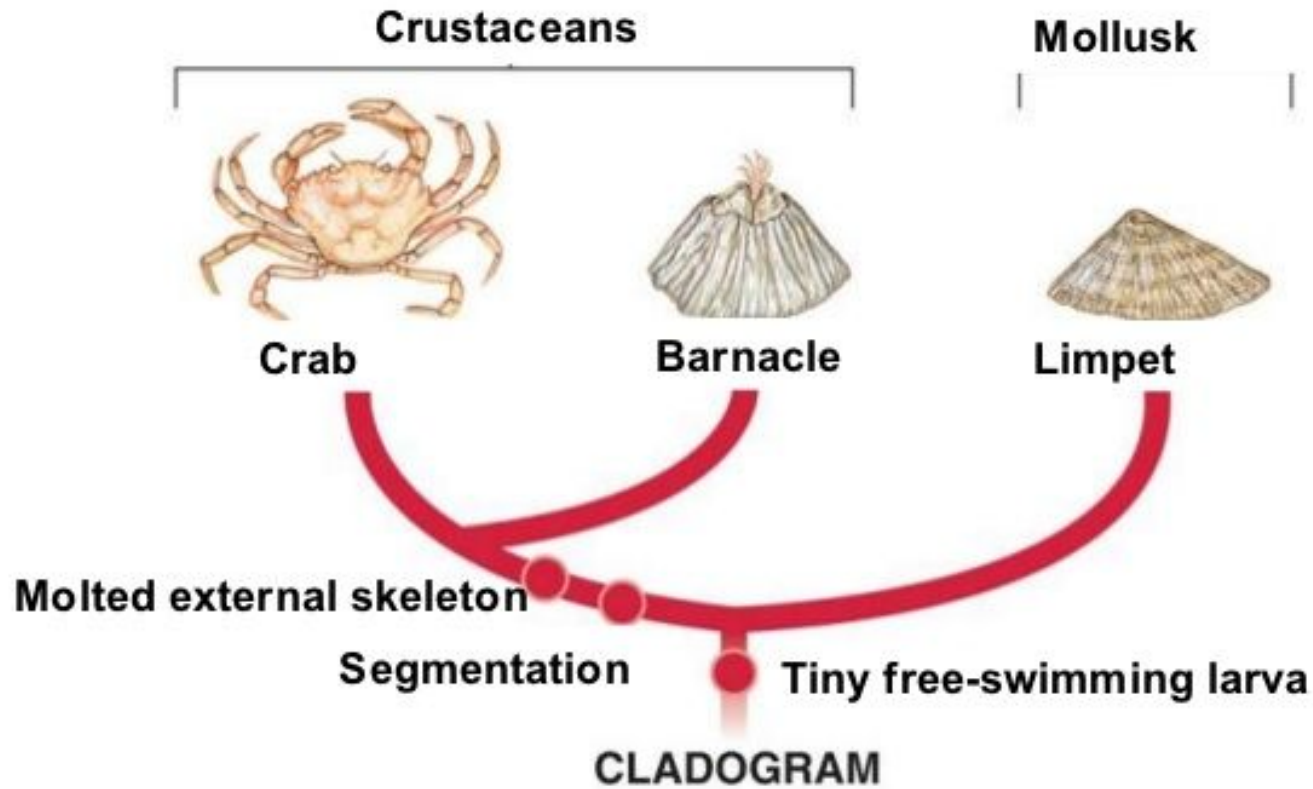


Barnacle

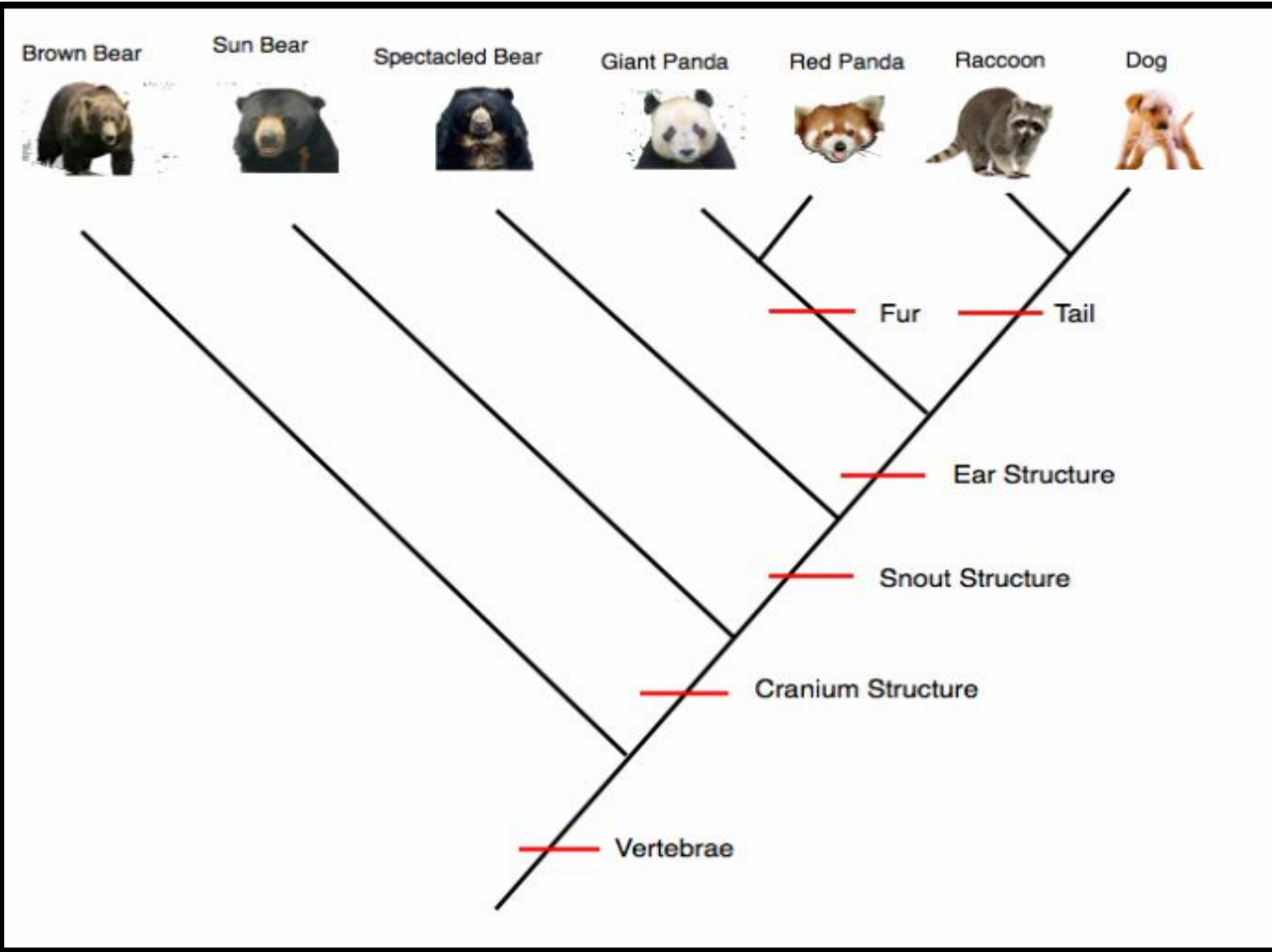


Limpet





Evolutionary Classification: the strategy of grouping organisms together based on their evolutionary history (genetic similarities).



Cladogram:
 diagram used to
 show evolutionary
 relationships
 between
 organisms