

## Lecture Notes: Intro to Biology

What is **science**?

What is the **goal** of science?

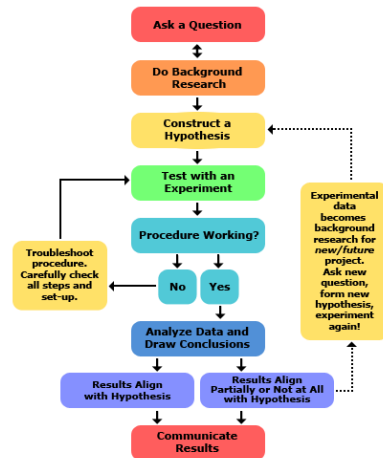
- The goal of science is to \_\_\_\_\_ and \_\_\_\_\_ the \_\_\_\_\_ world
- Science is an \_\_\_\_\_ to learn about the natural world

Thinking like a scientist...

- **Observation** of a phenomenon or problem.
- \_\_\_\_\_ is gathered from careful observation
  - \_\_\_\_\_: things that can be counted
  - \_\_\_\_\_: things that cannot be counted
- **Inference** is used to logically interpret data
  - \_\_\_\_\_: a conclusion reached based on evidence & reasoning

## The Scientific Method

- Question
- \_\_\_\_\_
- Experiment
- \_\_\_\_\_
- Analyze Data
- Make a Conclusion



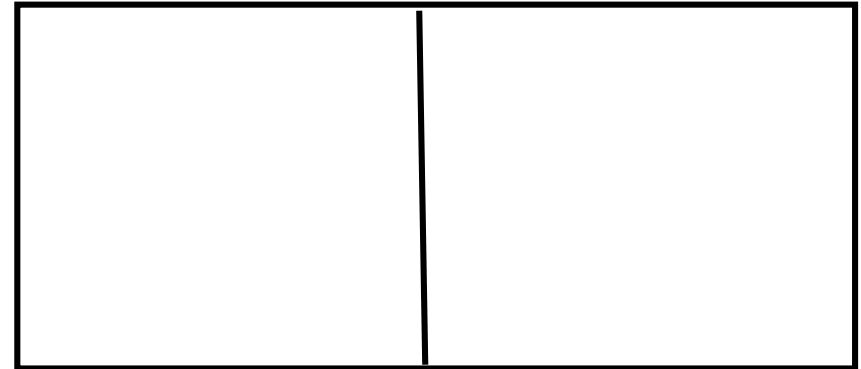
## Designing an experiment

For centuries people thought that \_\_\_\_\_ could arise from \_\_\_\_\_.

This was a theory called \_\_\_\_\_ generation.

## Spontaneous generation experiment by Francesco Redi.

\_\_\_\_\_ : features that are subject to change.



\_\_\_\_\_ variables: jar, type of meat, location, temperature, time

\_\_\_\_\_ variables: cork to keep flies away from meat

\_\_\_\_\_ variables: whether maggots appear

## Drawing a Conclusion

What was the conclusion of Redi's experiment?

---



---